

Bypass Valve Assembly

Model BPV – Automatic Pump Bypass & Isolating Manifold - Datasheet

Description

Automatic bypass valve assembly enabling the supply of mains water should a pump set fail. The assembly features a special low head-loss Double Check Valve assembly ([ED132](#)) and four full bore isolating valves with unions.

In service, the boosted water pressure is normally higher than mains and the Double Check Valve is closed. If the pumps fail - or are turned off for maintenance - water continues to the system at mains pressure, which is often sufficient to provide water for domestic purposes.

Traditionally bypasses are considered a source of stagnant water and a backflow risk. However the Arrow Valves Bypass Valve has minimal volume and the water is flushed either side by the flow to the cistern and from the pump.

The assembly has four servicing valves on a single convenient manifold. Servicing valves are provided for -

- Incoming (mains) This is acceptable as a stop valve
- Supply from pump
- Supply to pump set float valve
- Outlet to building

Now available with Tectite® Push-fit connections, offering ease of installation (no tools required) and a reliable connection. The Double Check Valve features flat faced unions facilitating maintenance if ever required.

Connection Pipes

Copper – Compression fittings, Solder Union or Tectite® Push-fit

Steel – Female BSPP

Plastic – Fittings available for most plastic systems

Specification

Pressure Supply 10 bar max.
 Temperature 65° max.
 Water Regulations [1212718](#)
 Approval



The bypass valve can provide uninterrupted supply of water whilst pumps are out of service

Water Regulations

This automatic bypass assembly has Water Regulations approval for the supply of main (wholesome) water for applications where the fluid category is 3 or below.

Materials

Body DZR Brass
 Valves Brass
 Cartridges POM

Applications

Any booster pump set where the boosted supply is for domestic purposes or no higher than Fluid Category 3.

Codes and Descriptions

Size	Code	Description
22 mm	BPV22C	Bypass Valve Assembly Comp.
28 mm	BPV28C	Bypass Valve Assembly Comp.
35 mm	BPV35C	Bypass Valve Assembly Comp.
42 mm	BPV42C	Bypass Valve Assembly Comp.
54 mm	BPV54C	Bypass Valve Assembly Comp.
DN20	BPV20FP	Bypass Valve Assembly Female
DN25	BPV25FP	Bypass Valve Assembly Female
DN32	BPV32FP	Bypass Valve Assembly Female
DN40	BPV40FP	Bypass Valve Assembly Female
DN50	BPV50FP	Bypass Valve Assembly Female
22 mm	BPV22T	Bypass Valve Assembly Tectite®
28 mm	BPV28T	Bypass Valve Assembly Tectite®
28x54	BPV28x54C	Bypass Valve Assembly Comp. Dual Conn
35x54	BPV35x54C	Bypass Valve Assembly Comp. Dual Conn

To specify dual size connections e.g. 28 mm Tectite® mains (left) with 54 mm solder union boosted (right) code is BPV28Tx54SU.

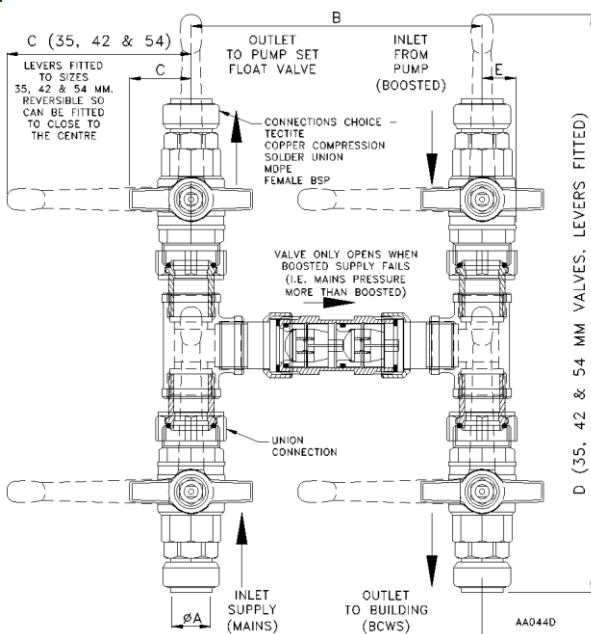
Arrow Valves Ltd

Tel: 01442 823123 Fax: 01442 823234

www.arrowvalves.co.uk

Arrow Valves Ltd reserve the right to change specifications, design and materials at any time without notice. All unit-less dimensions in mm.

© Copyright Arrow Valves Ltd 2001-2013



SIZE	A	B	C	D	E
22	163	29	282	21	
28	226	29	332	25	
35	287	128	485	30	
42	344	128	516	36	
54	370	167	543	47	