



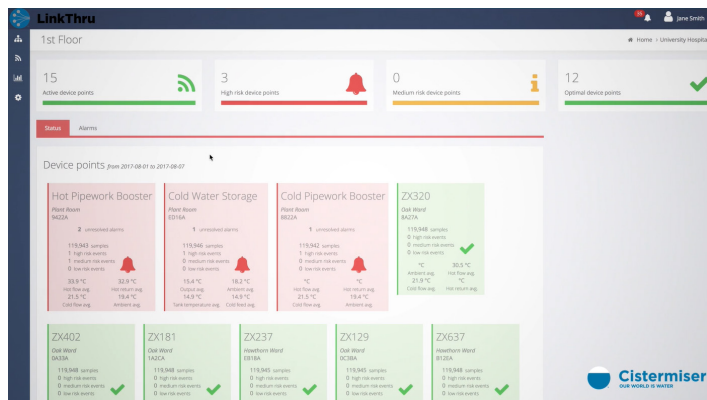
Cistermiser

OUR WORLD IS WATER

Water Temperature Monitoring Platform

Cistermiser is proud to showcase at IHEEM (October 2017) our new water temperature monitoring platform that will allow estate management and facility managers to comply with HSG274 and the need to maintain records. It enables cost effect real-time data capture, analysis, reporting, alarms, notifications and auditing as part of a Legionella control regime through Temperature Monitoring Units placed at sentinel points.

Water Temperature Monitoring Platform



Temperature Monitoring Unit



“Our new web-based software platform, in conjunction with Temperature Monitoring Units, eliminates the need for costly and potentially inaccurate manual measurement tasks, providing a vastly superior picture of likely risks, whilst meeting and exceeding regulatory requirements.”

D. Meacock, Technical Director, Cistermiser.

The Temperature Monitoring Units can be fixed in position or moved to provide temperature comparisons which enable identification of “dead legs” for example as part of the Risk Assessment. These devices can be used to monitor outlets, TMVs, incoming mains temperature, cold water storage, calorifiers and other parts of the water system.

Having constant, real-time, set of temperature data allows you to be much more proactive in your management of Legionella risk:

- Real-time data that alerts you to outlets that are at risk and that should be investigated
- Automatic notifications and alerts to staff to help implement proactive risk management
- A complete, on-line history and audit of all data and associated actions
- Accurate and constant data capture to give a complete picture of system behaviour compared to manual once-a-month reading
- Detects which outlets need to be flushed for at least 2 minutes as part of a control regime, and more importantly which ones don't (thus saving water)
- Identifies other risks – such as detecting temperatures that exceed safe limits and pose a risk of scalding, or risk of freezing pipes
- Report on outlet usage, detecting outlets that are under-used or where outlets have been left running
- Ability to integrate directly into Building Management systems such as Maximo, as well as other enterprise applications e.g. SAP

To find out about our new product or to register interest please contact 0118 969 1611 or email sales@cistermiser.co.uk