

“Conceal-A-Tap” – Concealed Hose Union Tap

Model HUC - (Vandal & Frost Resistant) - Datasheet

Description

Vandal proof and frost resistant hose union tap, which is recessed into a wall. The tap seat is located 100 mm deep into the wall and therefore within the thermal envelope of the building. The outlet drains once the tap is closed and hose removed - the unit is unlikely to freeze. A special key is supplied to extend the telescopic assembly and then the same key operates the tap.

The unit is suitable for any thickness of wall – the installer cuts the 15 mm copper tube to the required length. Walls or partitions less than 113 mm would result in the unit protruding behind the panel. The Conceal-A-Tap is ideal for standard cavity walls.

The hose usually hangs down to avoid kinking; however the telescopic assembly also rotates to enable the hose to exit in any direction. The unit may be installed in floors in frost protected areas (below floor mounting requires the water to be supplied through a type AB Air-gap – e.g. sports changing rooms etc.

Installation

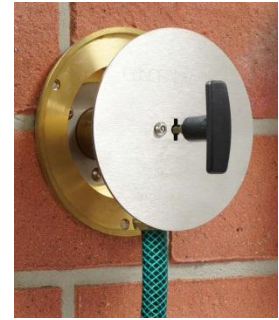
Conceal-A-Tap is easy to install, requiring a 100 mm diameter hole – use standard core drill – through the external wall. The internal wall requires a 17 mm hole (no insulation) or 30 mm with insulation. It is secured to the wall with three No.6 screws, which are covered by the disc (disc removable to facilitate installation – hexagon key supplied). The installation kit includes – full bore servicing valve, low head loss double check valve (model ED15C515), push-fit metal elbow, stainless screws, wall plugs and brass DN15 Inter-lock hose connector.

Specification

Pressure Supply	10 bar max.
Wall thickness	Any (will protrude if <113 mm)
Inlet	15 mm copper
Outlet compatible with Water Regulations Approval	Brass CK Inter-lock & “Hozelock”
	1010703
	Patent No. 2404238

Materials

Housing	Gunmetal
Disc (standard)	Stainless steel (brushed)



*Conceal-A-Tap – brushed stainless disc.
Suits any wall thickness*

Water Regulations

The local water company can “risk assess” the proposed installation and determine the level of protection required (G15.18). A Double Check Valve is the minimum backflow protection required for Fluid Category 3 applications – model [ED132](#) (very low head loss). Supply via an [RPZ](#) valve for Fluid Category 4. By default, all non-house HU taps are Fluid Category 5 (G6.1e) requiring a dedicated Break Tank and Booster Set with type AB air gap (model [BTAB](#)). A Servicing Valve should be fitted to the supply (G11.1).

Servicing

All servicing is performed from the front, where it is possible to replace the standard tap cartridge and all seals. The servicing kit contains: Cartridge, Seal set & silicone grease, 3 mm hexagon key.

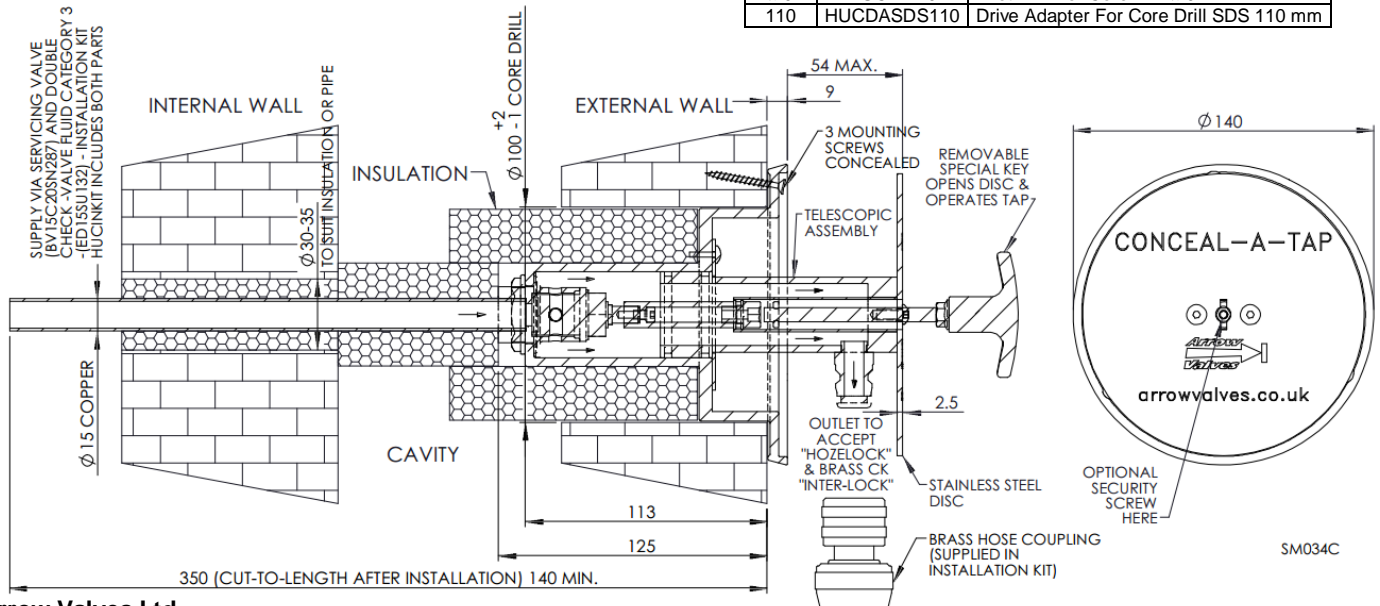
Options

The standard disc is brushed stainless, brass or coloured coatings available, contact us. Security kit includes additional screws and key, locking disc closed.

Range of hoses; wash down guns & quick connectors.

Codes and Descriptions

Size	Code	Description
15 mm	HUC15	Conceal-A-Tap Stainless Disc
15 mm	HUCINKIT	Conceal-A-Tap Installation Kit
	HUCSECKIT	Conceal-A-Tap Security Kit
	HUCSPKIT	Conceal-A-Tap Service Kit
	HUCKEY	Replacement HUC Key
Ø100	HUCD100TC	Core Drill Tungsten Carbide Ø100 x 110
Ø9	HUCDPD9	Pilot Drill For Core Drill Ø9
110	HUCDASDS110	Drive Adapter For Core Drill SDS 110 mm



Arrow Valves Ltd

Tel: 01442 823123 Fax: 01442 823234

www.arrowvalves.co.uk

Arrow Valves Ltd reserve the right to change specifications, design and materials at any time without notice.
All unit-less dimensions in mm.
© Copyright Arrow Valves Ltd 2003-2013

