

Shower Break Tank with AB Air Gap

Model AB2 - Datasheet

Description

Miniature Break Tank with Type AB air gap providing Fluid Category 5 protection. This arrangement has been specifically designed to provide a simple retro-fit solution for bath shower hoses in healthcare applications.

The polished stainless steel tank (cistern) is mounted to the ceiling or wall above the bath and intercepts the original shower hose. Warm water is supplied under gravity to the low resistance shower head and hose, which are supplied.

The tank incorporates a compact float valve which optimises the pressure supplying the handset and prevents any overflow from the tank. Once the supply is shut – bath taps closed or diverted from shower – the tank will empty and thus avoid Legionella risks associated with storing warm water.

The arrangement is intended for retro-fitting to baths with a shower hose requiring Fluid Category 5 protection. The efficacy is dependant on the height the cistern can be mounted above the in-use position of the shower head. 1 m head is generally considered to provide adequate performance for hair washing. *Note - the performance is not comparable to a pressurised shower system but compliant and greatly superior to Type DC arrangements – see clause R15.10.1.*

For new applications, a pressurised solution should be considered – see Care Shower (CSAB) or Ablution Plant (BTHW-1).

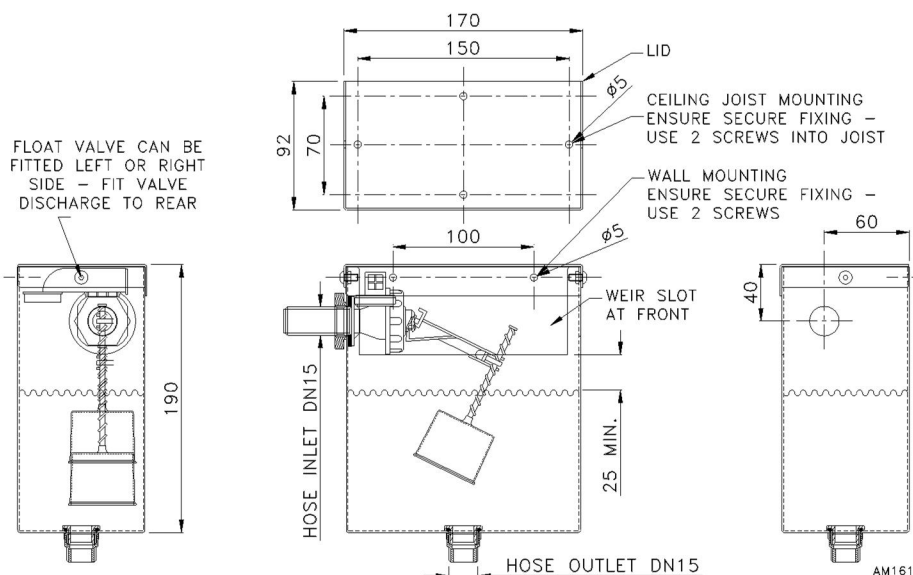
Specification

Pressure Supply	10 bar max.
Inlet Size	½" male DN15
Outlet Size	½" male DN15
Minimum head	1 m (tank level to in-use position)
Inlet device	Torbeck float valve
Outlet hose length	2 m supplied

Materials

Tank & Lid	Stainless steel 304 (polished)
------------	--------------------------------

Dimensions



Applications

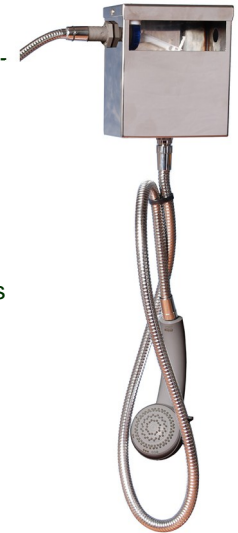
Fluid Category 5 applications – hoses capable of being submerged in -

- Nursing homes / hospital baths
- Bidets
- Toilets (WC's)
- Veterinary

Water Regulations

The assembly complies with the requirements of the Water Regulations when installed and used correctly.

A cistern with a Type AB air gap provides Fluid Category 5 protection, which provides protection even if the shower head comes into contact with faecal material, unlike an AUK1 arrangement.



AB2 – Miniature cistern with type AB air gap. Supplied with gravity chrome handset and hose.

Installation

Mount the cistern as high as reasonably possible, which typically means **securely** mounting to the ceiling directly above the bath.

The lid can be secured to a **ceiling joist** with two sturdy screws and the cistern is then attached with the two M5 screws.

Codes and Descriptions

Size	Code	Description
DN15	AB2HH	Shower Break Tank 2 m Hose Chrome Handset

Arrow Valves Ltd

Tel: 01442 823123 Fax: 01442 823234

www.arrowvalves.co.uk

Arrow Valves Ltd reserve the right to change specifications, design and materials at any time without notice. All unit-less dimensions in mm. © Copyright Arrow Valves Ltd 2011-2012

