

Standpipe Assembly

Model SPTG – Standpipe Short – Flange Mounting - Datasheet

Description

Tamperproof outside hose tap in stainless steel enclosure, with spherical type angled valve and hose connector. The SPTG has a hinged lid, which can be secured with a padlock, to prevent misuse or tampering.

The permanent short Standpipe features a **flange** at its base for bolting to a horizontal hard surface, such as flat roofs or concrete. The height from the outlet to ground complies with the Water Regulations and accommodates most buckets. The outlet is **vertical** and a hose can be fitted.

The housing includes foam insulation, which provides some frost resistance. The standpipe should be isolated and taps left open during potentially freezing conditions.

The Standpipe features a Double Check Valve providing Fluid Category 3 protection. A servicing valve is also supplied and all serviceable components are accessible from the front.

Specification

Pressure Supply	10 bar maximum
Inlet	20 or 25 MDPE or 22 mm Cu
Outlet	Inter-Lock Plug (quick release) (compatible with Hozelock)
Box material	304 Stainless Steel (bright)

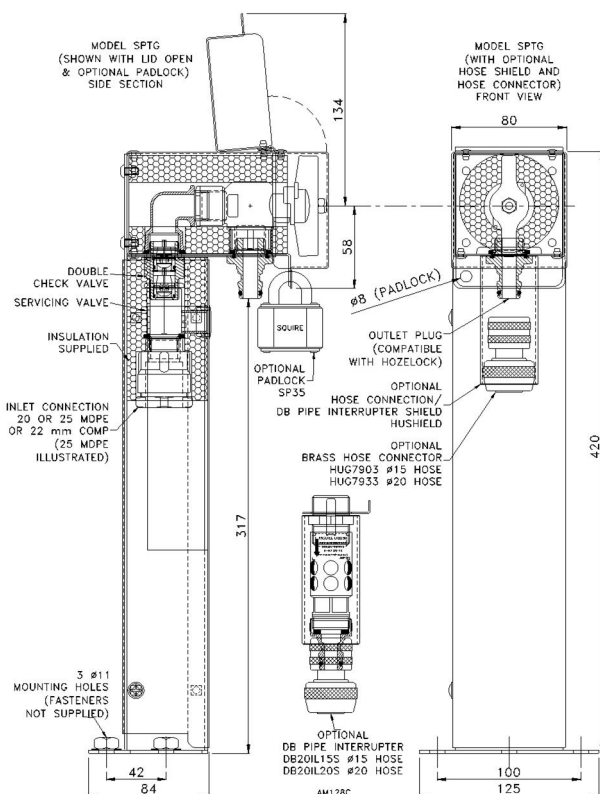
Applications

Model SPTG incorporates a Double Check Valve (ED device) and is suitable for Fluid Category 3 applications. This low-level standpipe is specifically designed for roof-top installation for window cleaning and roof top watering applications – a hose can be attached. *For installing in soft ground (flower beds) - see models SPTG2, SPTB, SPED or SPWP.*

Servicing

The spherical valve features maintenance free PTFE seats. It is possible to tighten or replace the spindle PTFE seal. A servicing valve is provided, accessible through the front cover.

Dimensions



*Model SPTG
Low level Standpipe with
Double Check Valve for
Fluid Category 3
protection. Flange
enables mounting to flat
surface – concrete or flat
roof for window cleaning
and roof garden
watering*

Water Regulations

The Double Check Valve fitted provides adequate protection against Fluid Category 3 risks.

A DB Pipe Interrupter can be fitted for certain Fluid Category 4 applications, such as mini irrigation systems. By default, all non-house HU taps are Fluid Category 5 (G6.1e) requiring a dedicated Break Tank and Booster Set with type AB air gap (model BTAB or BTMIDI).

Options

Padlocks – high anti rust, model SP35 supplied with 2 keys or code SPCP1 has four digit combination.

Hose connector sockets – Brass quick release coupling for connecting a hose to the Tap Box outlet plug. Codes - HUG7903 (1/2"), HUG7933 (3/4"). *Note hose connector plug is common to 1/2" and 3/4" Tap Boxes. Compatible with Hozelock.*

Shield - Hose Connection/DB Pipe Interrupter Shield – code - HUSHIELD with lock plate. Stainless steel tube that covers the brass hose connector or DB Pipe Interrupter. The Shield is secured with a lock plate inside the box, which is inaccessible once the lid is padlocked. *Fits all models.*

DB Pipe Interrupter – Fits to 3/4" male outlet from Tap Box and provides Fluid Category 4 protection. DB20ILS15 includes – male outlet option with interlock plug HUG791575M, Shield HUSHIELD and hose connection socket HUG7903 (Ø15 Hose) or DB20ILS20 (Ø20 Hose).

Male Outlet – The 1/2" Tap Box is normally supplied with Hozelock compatible hose plug outlet. A conventional 3/4" male thread with removable hose plug is available – code HUG791575M. *Included in DB Pipe Interrupter option.*

Codes and Descriptions

Size	Code	Description
DN15	SPTG15X20	1/2" Standpipe Tap Guard Flange 20 MDPE
DN15	SPTG15X25	1/2" Standpipe Tap Guard Flange 25 MDPE
	SP35	Padlock c/w 2 Keys KA - Std Shackle
	SPCP1	Squire Padlock Combination
1/2"	HUG791575M	Male Outlet (3/4") and Hose Plug – 1/2" Tap Box
DN15	HUG7903	Hose Connector Inter-Lock Socket
	HUSHIELD	Hose Connection/DB Pipe Interrupter Shield
	DB20ILS15	Pipe Int. DB HUSHIELD 1/2" Hose Connector
DN15	HUG7943	Spray Gun Medium Duty Var. Vol Inter-Lock
DN15	HU15NTBIL	Washdn Gun Heavy Brass Intlock Hose Con

Arrow Valves Ltd

Tel: 01442 823123

Fax: 01442 823234

www.arrowvalves.co.uk

info@arrowvalves.co.uk

Arrow Valves Ltd reserve the right to change specifications, design and materials at any time without notice.

All unit-less dimensions in mm.

© Copyright Arrow Valves Ltd 2009-2012



Standpipe Assembly

Model SPTG2 – Double Tap Guard Standpipe - Datasheet

Description

Double outlet permanent standpipe in tamperproof stainless steel enclosure, with two spherical type angled valves. Designed for installation in soft ground. Both hinged lids can be secured with a padlock, to prevent misuse or tampering.

The STPG2 is designed for multiple use such as two hose pipes at allotments or the ability to fill a bucket / watering can whilst a hose pipe is left attached to the second tap.

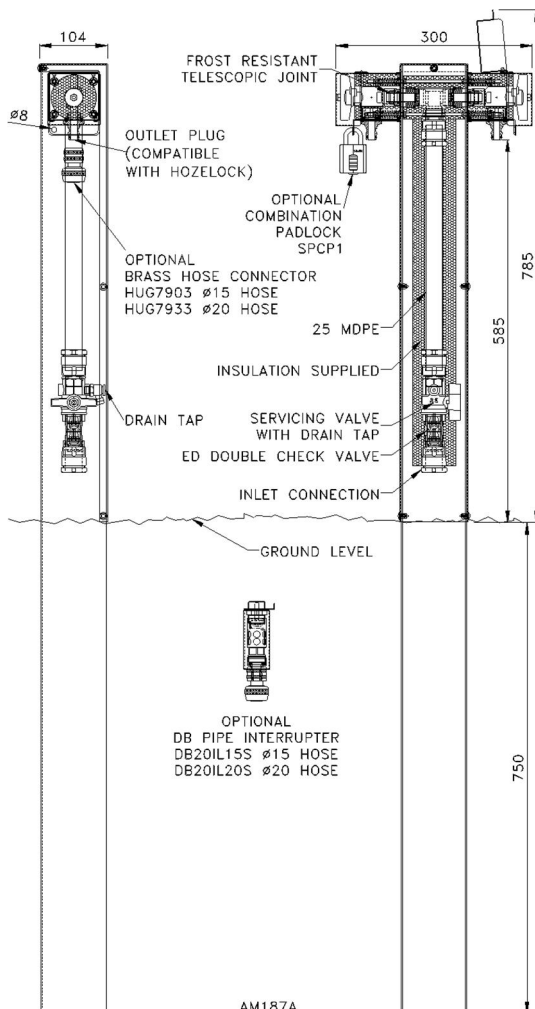
The heavy 2mm gauge stainless steel post houses foam insulation, which provides some frost resistance for the valves and supply pipe. The standpipe should be isolated and taps left open during potentially freezing conditions. An integrated drain tap is also provided. However to cope with overnight frost, special telescopic joints and springs allow for ice induced expansion, preventing damage. The supply pipe should be laid 750mm below ground.

The standpipe features a double check valve (ED device) providing Fluid Category 3 protection. A servicing valve is also supplied and all serviceable components are accessible from the front.

Specification

Pressure Supply	10 bar maximum
Inlet	25 MDPE or 22mm Cu
Outlets	2 x Inter-Lock Plug (quick release) (compatible with Hozelock)
Material	304 Stainless Steel (bright)

Dimensions



Model SPTG2
Double Tap Standpipe.
For installation directly
into soft ground.
Stands 700mm approx.
above ground.

Frost resistant design.

Water Regulations

The assembly complies with the requirements of the Water Regulations when installed and used correctly. The Double Check Valve fitted provides adequate protection against Fluid Category 3 risks. A DB Pipe Interrupter can be fitted for certain Fluid Category 4 applications, such as mini irrigation systems.

Options (note – 2 required for Double Tap SPTG2)

Padlocks – high anti rust, model SP35 supplied with 2 keys or code SPCP1 has four digit combination.

Hose connector sockets – Brass quick release coupling for connecting a hose to the Tap Box outlet plugs. Codes – HUG7903 (1/2"), HUG7933 (3/4"). Note hose connector plugs are common to 1/2" and 3/4" Taps.

Shield – Hose Connection/DB Interrupter Shield – code – HUSHIELD with lock plate. Stainless steel tube that covers the brass hose connectors or DB Pipe Interrupter. The shield is secured with a lock plate inside the box, which is inaccessible once the lid is padlocked.

DB Pipe Interrupter – Fits to 3/4" male outlet from Tap Box and provides Fluid Category 4 protection. DB20ILS15 includes – male outlet option with interlock plug HUG791575M, Shield HUSHIELD and hose connection socket HUG7903 (Ø15 Hose) or DB20ILS20 (Ø20 Hose).

Male Outlet – The 1/2" Tap Box is normally supplied with Hozelock compatible hose plug outlet. A conventional 3/4" male thread with removable hose plug is available – code HUG791575M. Included in DB Pipe Interrupter option.

Codes and Descriptions

Size	Code	Description
DN15	SPTG2-25DT	1/2" Standpipe Tap Guard 25 MDPE Drain Tap
	SP35	Padlock c/w 2 Keys KA – Standard Shackle
	SPCP1	Padlock Combination
1/2"	HUG791575M	Male Outlet (3/4") and Hose Plug - 1/2" Tap Box
DN15	HUG7903	Hose Connector Inter-Lock Socket
	HUSHIELD	Hose Connection/DB Pipe Interrupter Shield
	DB20ILS15	Pipe Int. DB HUSHIELD 1/2" Hose Connector
DN15	HUG7943	Spray Gun Medium Duty Var. Vol Inter-Lock
DN15	HU15NTBIL	Washdn Gun Heavy Brass Intlock Hose Con

Arrow Valves Ltd

Tel: 01442 823123

Fax: 01442 823234

www.arrowvalves.co.uk

info@arrowvalves.co.uk

Arrow Valves Ltd reserve the right to change specifications,

design and materials at any time without notice.

All unit-less dimensions in mm.

© Copyright Arrow Valves Ltd 2009-2012

